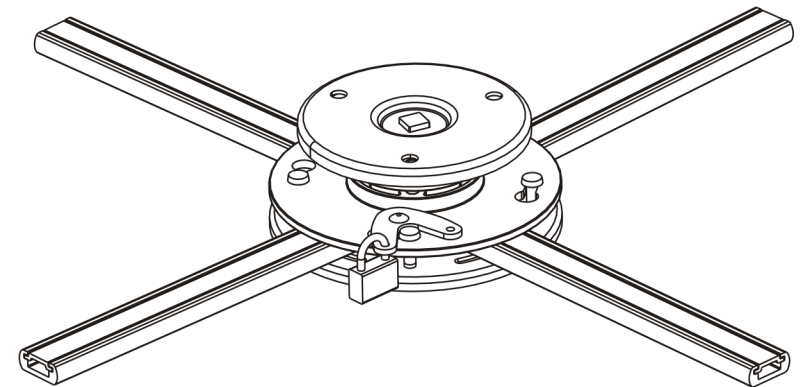




Manual

celexon projector ceiling mount universal PS Ultraflat



Caution:

DO NOT EXCEED RATED LISTED WEIGHT.
SERIOUS INJURY OR PROPERTY DAMAGE MAY
OCCUR!

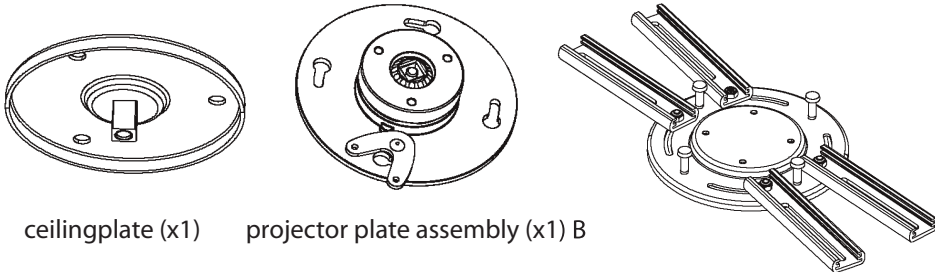
Note: Read the entire instruction manual before you start installation and assembly.

Warning

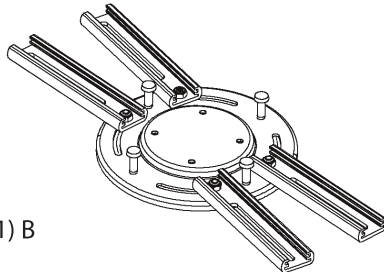
- Do not begin the installation until you have read and understood all the instructions and warnings contained in this installation sheet. If you have any questions regarding any of the instructions or warnings, please contact your local distributor.
- This mounting bracket was designed to be installed and utilised ONLY as specified in this manual. Improper installation of this product may cause damage or serious injury.
- This product should only be installed by someone with good mechanical ability who has basic building experience and fully understands this manual.
- Make sure that the supporting surface will safely support the combined weight of the equipment and all attached hardware and components.
- Always use an assistant or mechanical lifting equipment to safely lift and position the equipment.
- Tighten screws firmly, but do not over tighten. Over tightening can cause damage to the items, This greatly reduces their holding power.
- This product is intended for indoor use only. Using this product outdoors could lead to product failure and personal injury.

Components

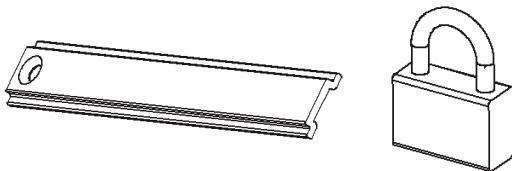
Important: Ensure that you have received all parts according to the component checklist prior to installation. If any parts are missing or faulty, telephone your local distributor for a replacement.



ceilingplate (x1) projector plate assembly (x1) B

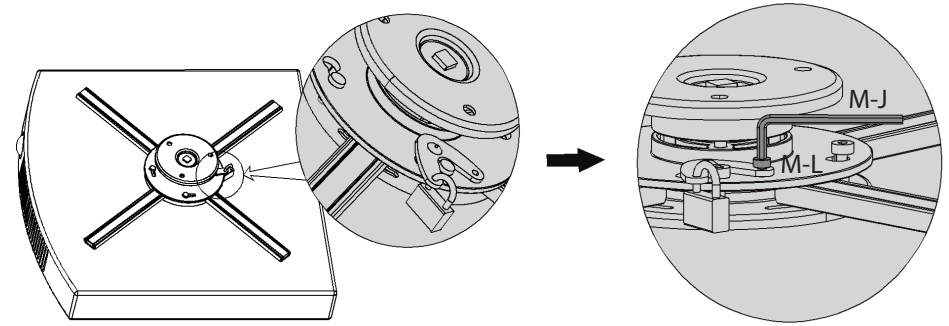


adapter bracket (x1) E



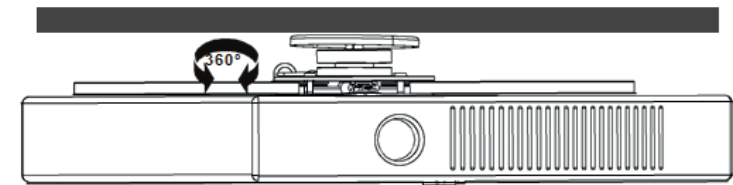
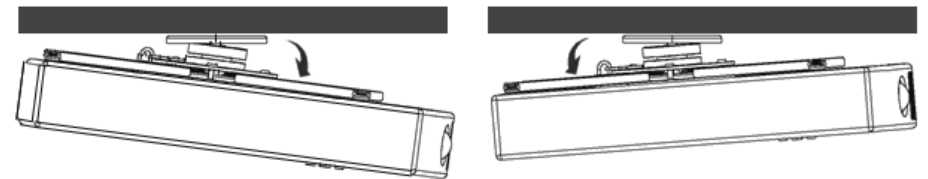
safe cover (x4) C

padlock (x1) D



Use the padlock in the locking plate and then fix the locking plate with a screw to prevent the projector plate assembly rocking in use.

Pitching Angle Adjustment

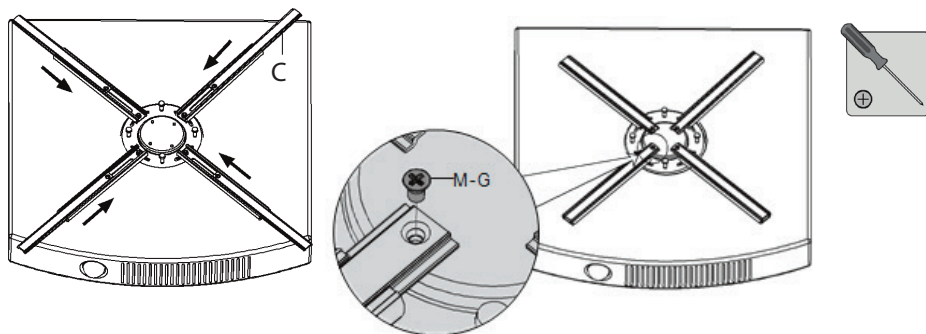


Adjust to the desired angle.

Maintenance

- Check that the bracket is secure and safe to use at regular intervals(at least every three months).
- Please contact your distributor if you have any questions.

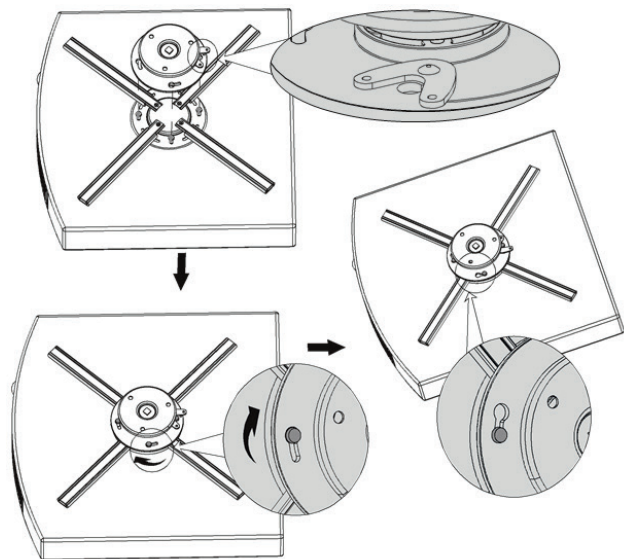
Installing the Safe Covers



Insert the four safe covers into the arms of adapter bracket till they fit mounting hole pattern.

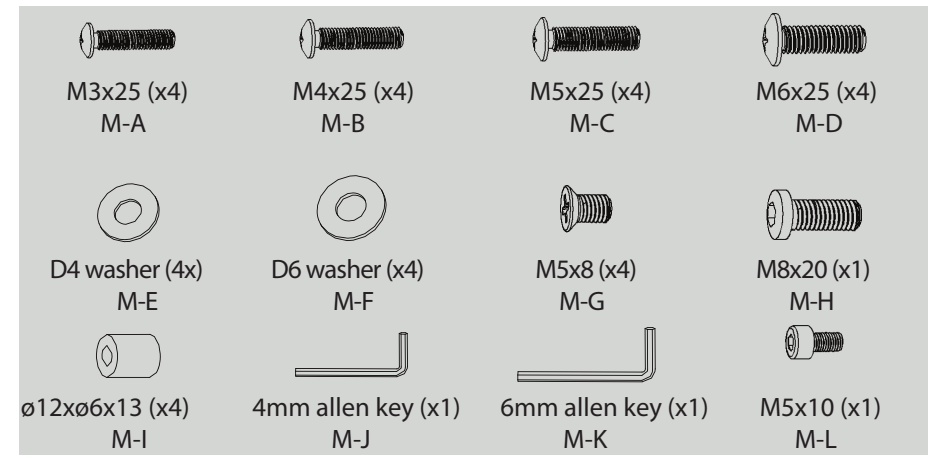
Use four screws to fix the safe covers and tighten all screws with a proper screwdriver.

Hanging the Bracket onto the Ceiling Plate

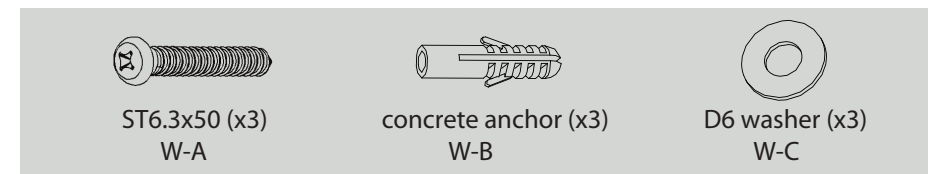


Carefully guide the projector bracket with the four screws into the keyhole opening, slowly turn the projector bracket clockwise into place.

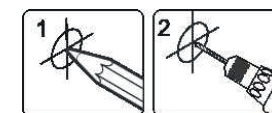
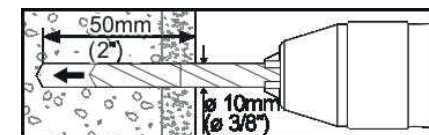
Package M



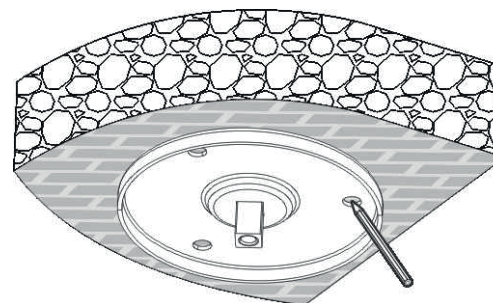
Package W

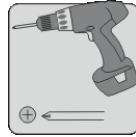
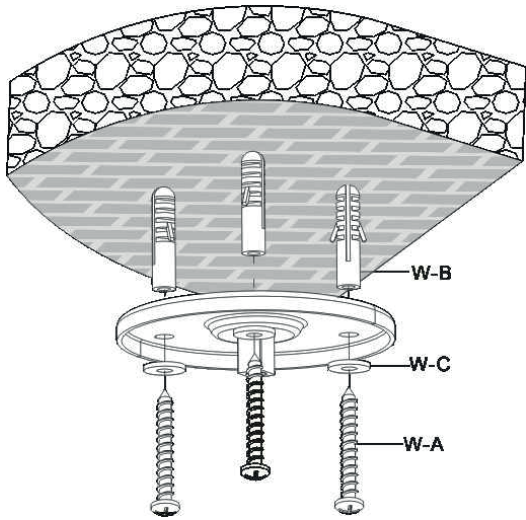


For Solid Brick and Concrete Mounting



Drill three pilot holes



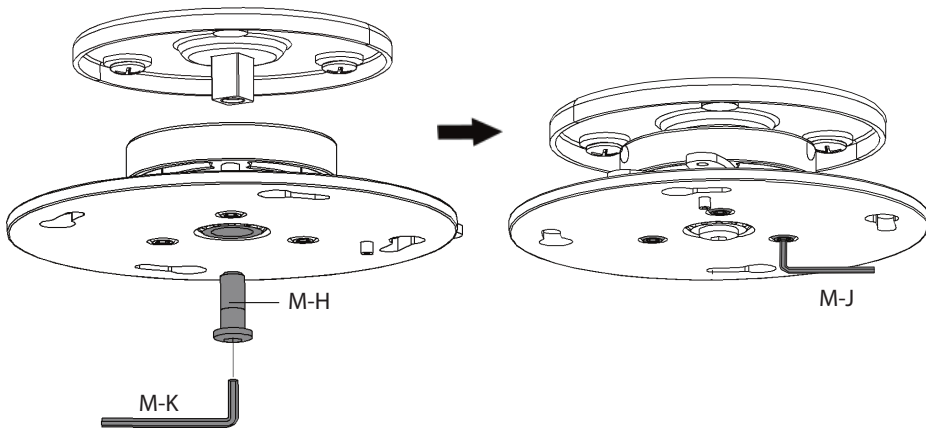


Screw the ceiling plate onto the ceiling

WARNING

Installer must verify that the supporting surface will safely support the combined weight of the equipment and all attached hardware and components.

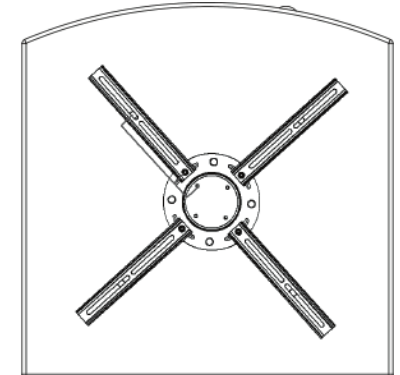
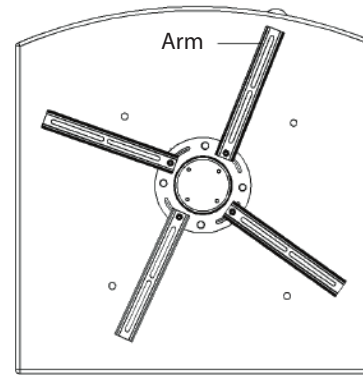
Installing the Projector Plate Assembly



Attach the projector plate assembly to the ceiling plate using the supplied screw.

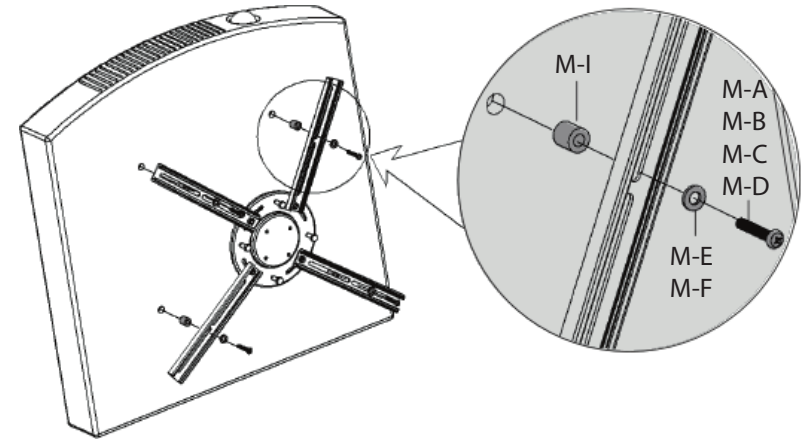
It is necessary to loosen or tighten the adjust screws with an Allen key according to the weight of the projector installed.

Installing the Adapter Bracket



Place the projector bracket as close as possible to the projector's center of gravity. Position the holes of arms over the mounting holes.

Make sure three point in a line to help with screwing the safe covers.



Note: If there are only three mounting holes using three arms of adapter bracket.

Important: If the projector does not have at least three mounting holes, do not use this adapter bracket.

Screw the adapter bracket onto the projector.
TIGHTEN ALL SCREWS BUT DO NOT OVER TIGHTEN!