

Smart ideas for the bigger picture.

celexon - your specialist
for home cinema and AV solutions

PRODUCT INFORMATION

The celexon Economy height adjustable display Trolley Adjust-3270M is a trolley for 32"- 70" Displays. With a load capacity of up to 120kg this display stand is perfect for use in different rooms and supports displays from all major manufacturers. The height can be adjusted from 153 - 168cm. This trolley offers practical features such as an integrated storage shelf and a height adjustable camera mount.

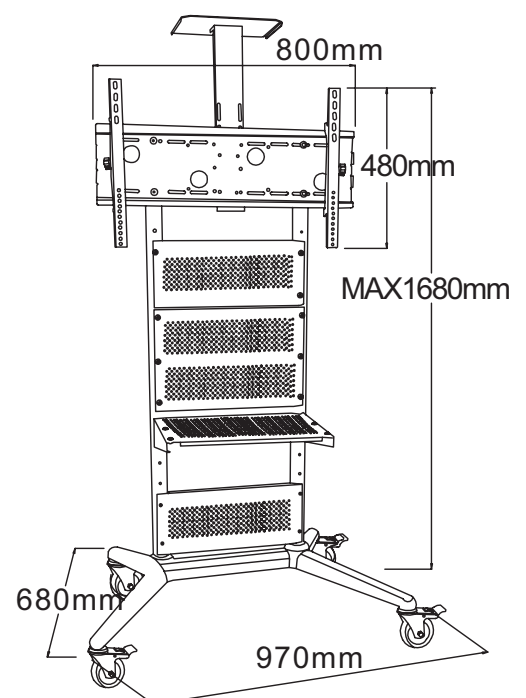
The sturdy double column construction made of painted steel with 4 heavy duty castors is easy to move around and its X-Base stand has two lockable castors to offer protection against unwanted movement.

KEY INFORMATION

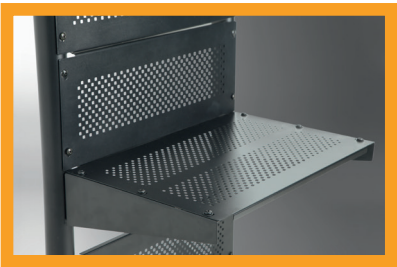
- Double column construction with a max. Height of 168cm
- Supports the following Vesa standards
 - Horizontal up to 600mm (200, 280, 300, 400, 440, 580, 600)
 - Vertical up to 400mm (stepless)
- Mobile rolling frame painted in matt black
- Suitable for all 32" - 70" displays
- Maximum load > 120 kg
- Total system weight approx. 21 kg



celexon Economy Adjust-3270M



PHOTOS



Storage shelf



Camera holder

PRODUCT DATA

Name	Dimensions (mm) H x W x D	Net-weight (kg)	Supported Max. VESA standard	Height adjustment (cm)	EAN
celexon Economy Adjust-3270M	960 x 670 x 1670	21	600 x 400	153 - 168	4260094740442

The stated values represent the mean values of a unit produced in series production so minor deviations are possible. Due to continuous technical improvements, we reserve the right to change design and specifications without prior notice.

Received from your celexon reseller:

