



## **Acer WirelessMirror (HWA1) HDMI Wireless Dongle**

### **Quick Start Guide**

Copyright © 2018 Acer Incorporated. All Rights Reserved. No part of this publication may be reproduced, stored in a retrieval system, or transmitted, in any form or by any means, electronically, mechanically, by photocopy, recording or otherwise, without the prior written permission of Acer Incorporated.

## Regulations and Safety Notices

### FCC Statement

1. This device complies with Part 15 of the FCC Rules. Operation is subject to the following conditions:

(1) This device may not cause harmful interference.

(2) This device must accept any interference received, including interference that may cause undesired operation.

2. Changes or modifications not expressly approved by the party responsible for compliance could void the user's authority to operate the equipment.

NOTE: This equipment has been tested and found to comply with the limits for a Class B digital device, pursuant to Part 15 of the FCC Rules. These limits are designed to provide reasonable protection against harmful interference in a residential installation.

This equipment generates uses and can radiate radio frequency energy and, if not installed and used in accordance with the instructions, may cause harmful interference to radio communications. However, there is no guarantee that interference will not occur in a particular installation. If this equipment does cause harmful interference to radio or television reception, which can be determined by turning the equipment off and on, the user is encouraged to try to correct the interference by one or more of the following measures:

- Reorient or relocate the receiving antenna.

- Increase the separation between the equipment and receiver.

- Connect the equipment into an outlet on a circuit different from that to which the receiver is connected.

- Consult the dealer or an experienced radio/TV technician for help.

### FCC Radiation Exposure Statement

This equipment complies with FCC radiation exposure limits set forth for an uncontrolled environment. This equipment should be installed and operated with a minimum distance of 20 cm between the radiator and your body.

### CE declaration of conformity

We hereby declare above product is in compliance with the essential requirements and other relevant provisions of EMC Directive 2014/30/EU, Low Voltage Directive 2014/35/EU and RoHS Directive 2011/65/EU and Directive 2009/125/EC with regard to establishing a framework for the setting of ecodesign requirements for energy-related product.

### Disposal instructions

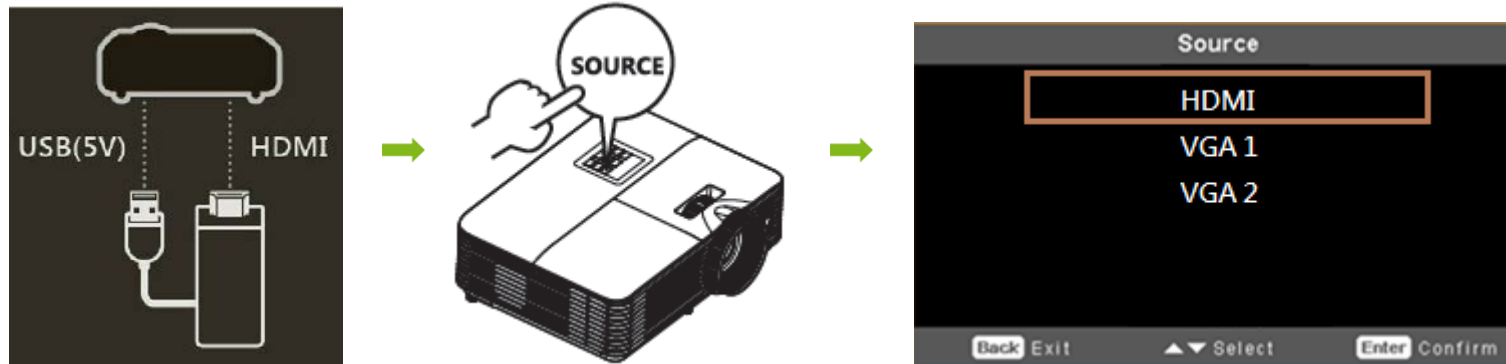
Do not throw this electronic device into the trash when discarding. To minimize pollution and ensure utmost protection of the global environment, please recycle.

For more information on the Waste from Electrical and Electronics Equipment (WEEE) regulations, visit

<http://www.acer-group.com/public/Sustainability/sustainability01.htm>



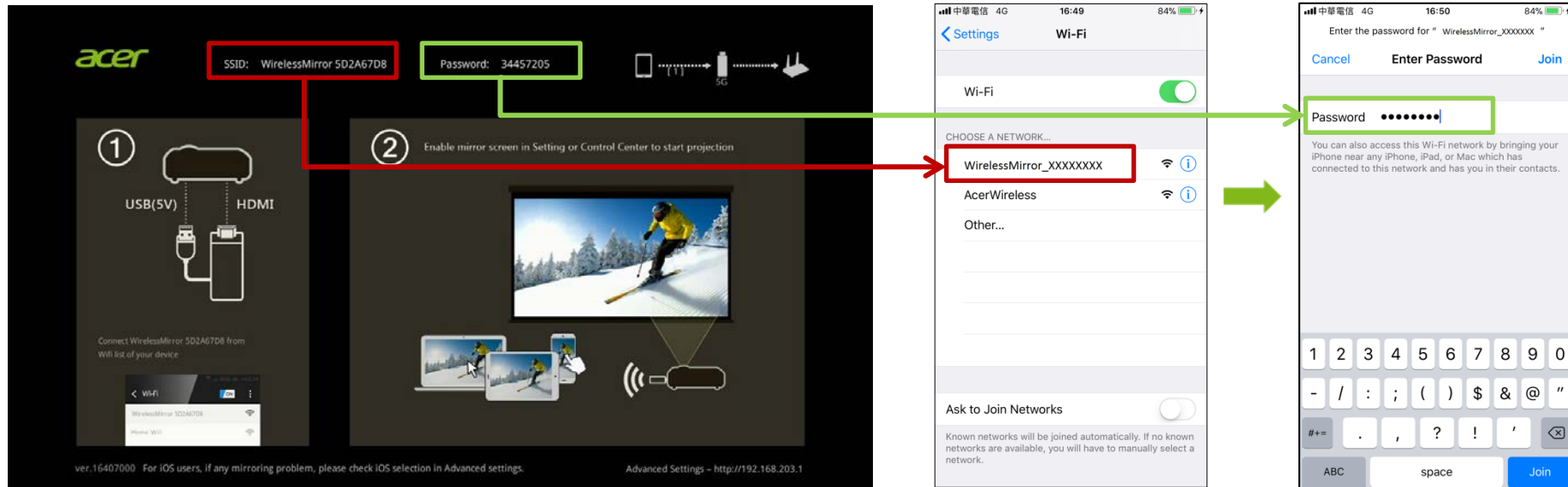
## Installation



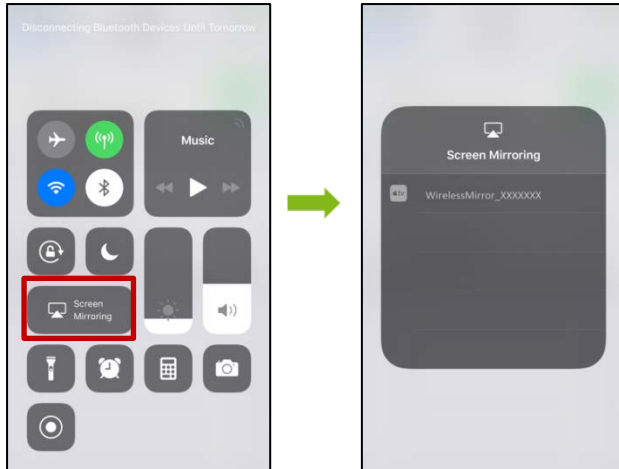
## How to Get Started

- iOS:

Step 1: Connect Acer WirelessMirror by selecting SSID and enter password shown on standby page of your projector

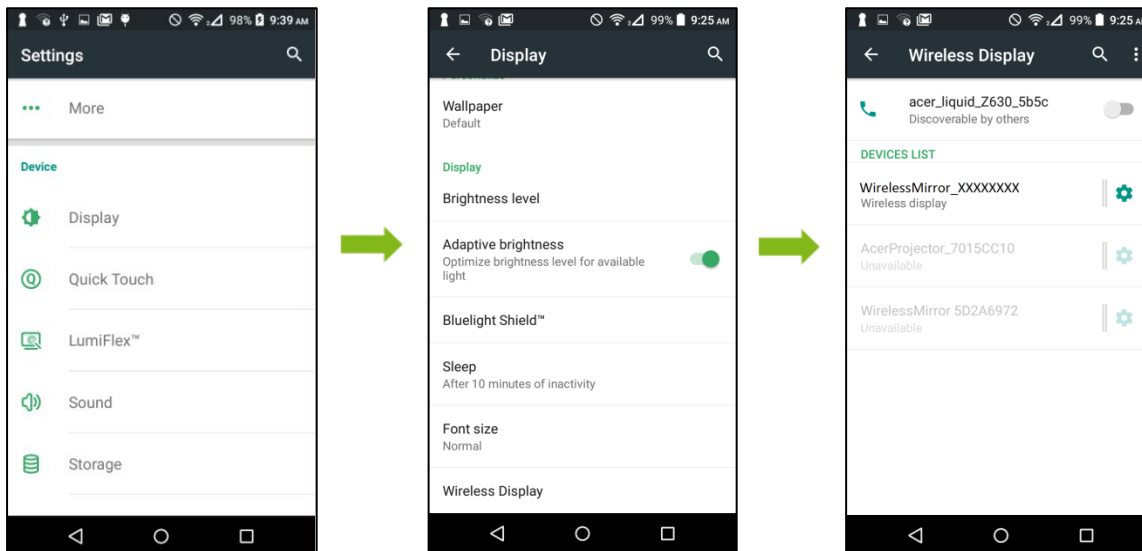


Step 2: Select “Screen Mirroring” to start projection



## ● Android

Select Mirror Screen or Wireless Display in Settings from your mobile device. (Note: The naming of mirroring function varies mobiles.)

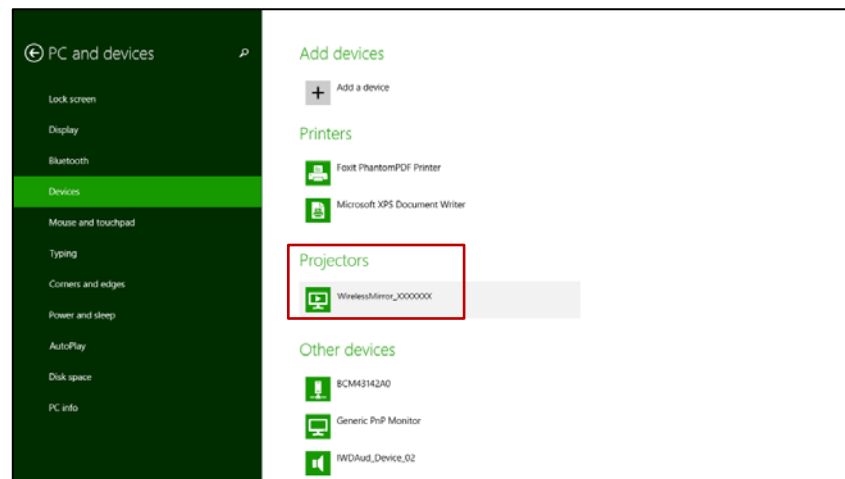
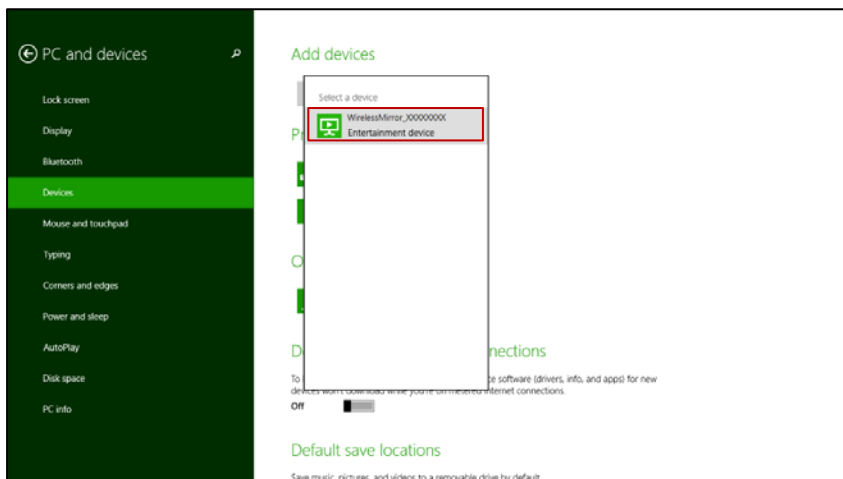


- **Windows OS**

- **For Win 8.1**

Step 1: Select Mirror Screen function from “Devices” and add a wireless display.

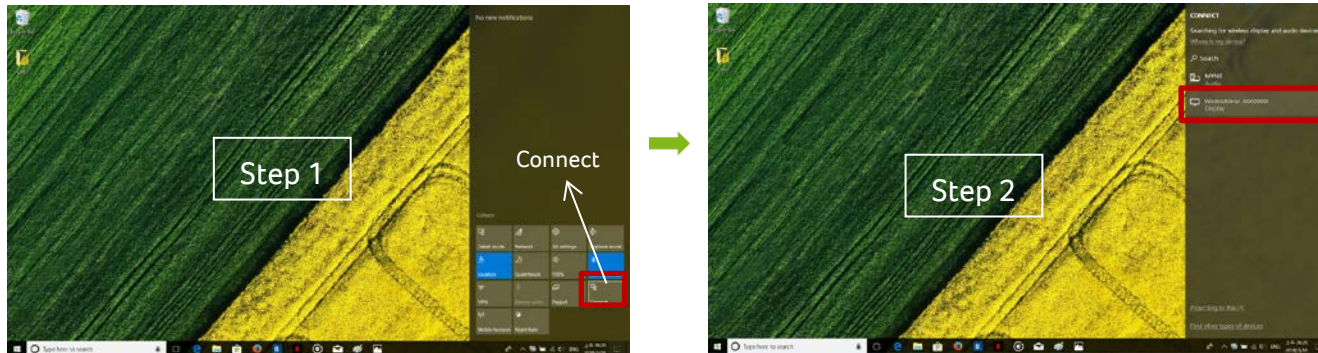
Step 2: Select WirelessMirror SSID and enter password to start projection



- **For Win 10**

Step 1: Select Mirror Screen function from “**Connect.**”

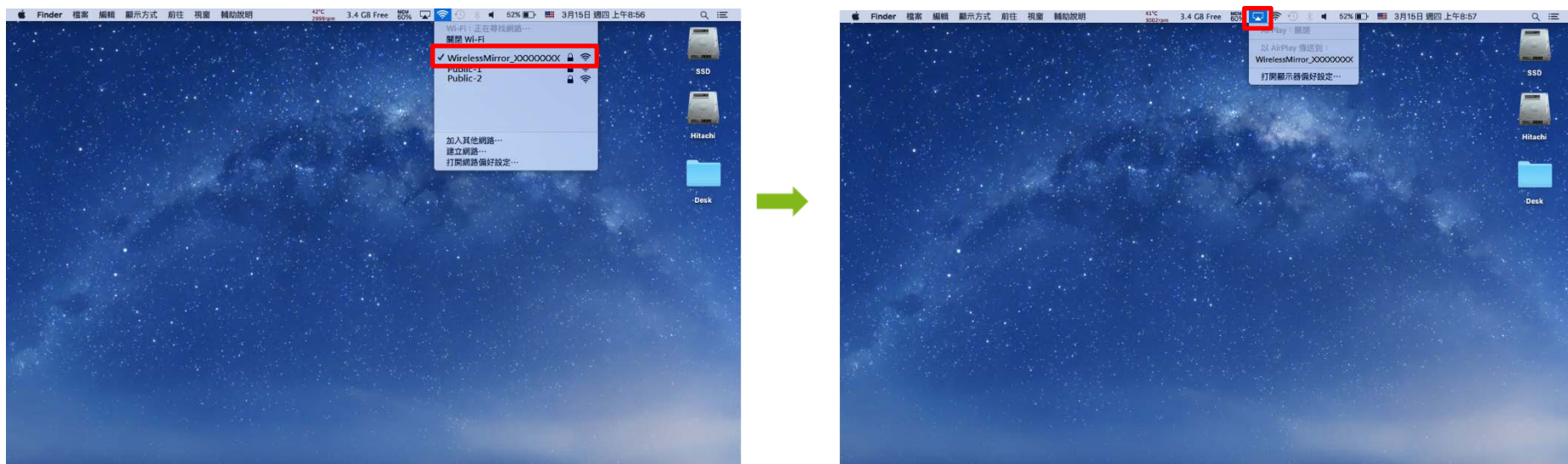
Step 2: Select WirelessMirror SSID and enter password to start projection



● **Mac OS**

Step 1: Use your phone to connect Acer WirelessMirror by selecting SSID and enter password shown on standby page of your projector.

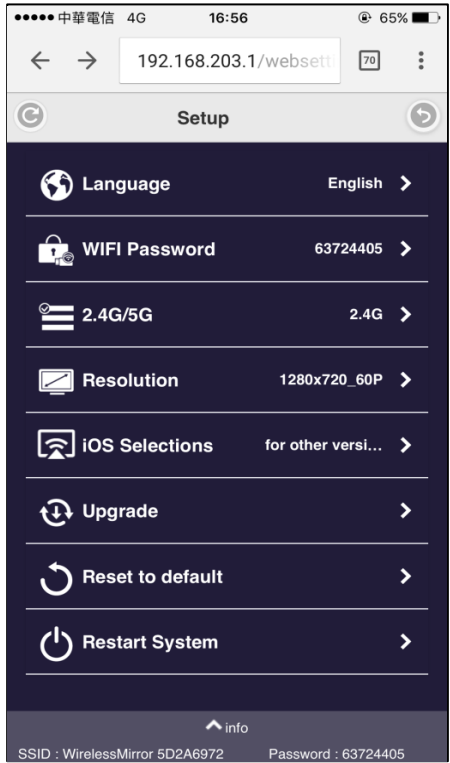
Step 2: Select WirelessMirror SSID to start screen mirroring.



## ● Advanced Settings

Step 1: Use your device to connect SSID and enter password of WirelessMirror

Step 2: Open browser and enter <http://192.168.203.1>

Items	Description	
Language	Select language for Advanced Settings	
WIFI Password	Change password of WirelessMirror	
2.4G/5G	Select 2.4G or 5G WiFi	
Resolution	Select output resolution	
iOS selection	Select appropriate iOS version for iPhone	
Upgrade	Do online firmware upgrade. (Required to connect internet first)	
Reset to default	Reset to factory preset values.	
Restart system	Reboot dongle.	

Note 1: Required to restart system after setting adjustment

Note 2: Upgrade firmware when column of Upgrade shows “New Version!” and reboot system.

Note 3: 2.4G/5G could be switched either by physical button of dongle or in advanced settings. The strength of WiFi depends on environment with less walls and varies by devices of different brands’ devices.

## Product Specifications

Product Name	Acer WirelessMirror HDMI Dongle (HWA1)
Input Interface	Micro USB (DC 5V/1A power required)
Output Interface	HDMI 1.2
WiFi Standard	IEEE 802.11 a/b/g/n/ac
Frequency Band	2.4G / 5G (Default by 2.4G)
Security	WAPA/WPA2
CPU	AM8252
RAM	DDR3 128MB
Flash	NAND flash 128MB
Output Resolution	1280x720@60Hz / 1920x1080@24Hz / 1920x1080@30Hz
Dimension	94 mm x 30 mm x 14.5mm
Weight	30g +/- 10g
System Requirements	<ul style="list-style-type: none"><li>● <b>For PC:</b><ul style="list-style-type: none"><li>- Windows OS: Windows 8.1 or above with mirroring screen support</li><li>- Mac OS: Mac OS X 10.11 or above with mirroring screen support</li></ul></li><li>● <b>For Smartphone/Tablet:</b><ul style="list-style-type: none"><li>- iOS 9.3 or above with mirroring screen support</li><li>- Android 5.0 or above mirroring screen support</li></ul></li></ul>

## Learn more

Visit [www.acer.com](http://www.acer.com) and search for "Drivers and Manuals" for more information including the User's Guide, Frequently Asked Questions and more tips for your Acer WirelessMirror.